

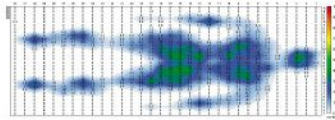
**Features:**

- ◆ Patented air compressor chamber with ultra-quiet operation
- ◆ Adjustable comfort range with easy operating control knob (only available with Excel2000)
- ◆ Adjustable hangers to suit any kind of hospital bed frame (only available with Excel2000)
- ◆ Extension sheet on both top and bottom side of pad for added safety (only available with Excel2000)

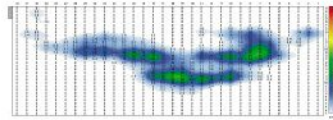


EXCEL 1000

**Pressure Distribution**



Lying on the back



Lying on the side



EXCEL 2000

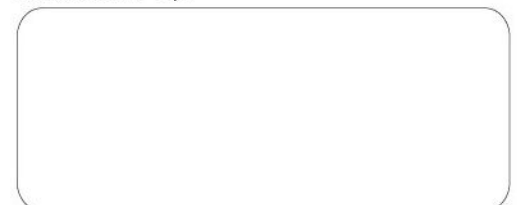
**Specifications**

	EXCEL 2000	EXCEL 1000	
<b>PUMP</b>	Electrical	AC120V/60Hz, <1A AC230V/50Hz, <1A	AC120V/60Hz, <1A AC230V/50Hz, <1A
	Air Output (lpm)	> 4	> 4
	Pressure Range (mmHg)	50 – 105	100
	Cycle Time	5 min @ 60 Hz, 6 min @ 50 Hz	5 min @ 60 Hz, 6 min @ 50 Hz
	Dimension (L x W x H)	25.4 x 13 x 10 cm or 10" x 5.1" x 3.9"	25.4 x 13 x 10 cm or 10" x 5.1" x 3.9"
<b>MATTRESS</b>	Weight	1.6 kg or 3.5 lb	1.3 kg or 2.9 lb
	Arrangement	2.5" bubble pad (w/ extension sheet)	2.5" bubble pad
	Material	PVC	PVC
	Dimension (L x W x H)	198 x 86 x 6.4 cm or 80" x 33.9" x 2.5"	198 x 86 x 6.4 cm or 80" x 33.9" x 2.5"
	Weight	1.9 kg or 4.2 lb	2.4 kg or 5.3 lb

All specifications are subject to change without notice.



Distributed by:

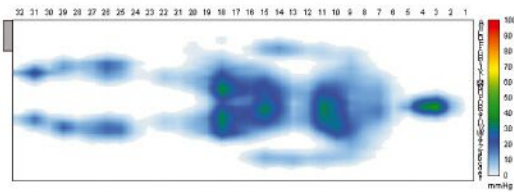


**APEX MEDICAL CORP.**

9, Min Sheng St. Tu-Cheng, Taipei County, Taiwan  
 TEL: +886-2-2268-3100  
 FAX: +886-2-2268-6525  
 E-mail: ss@apexmedical.com.tw  
 http://www.apexmedical.com.tw

**Features:**

- ◆ Adjustable comfort range with easy operating control knob
- ◆ Patented air compressor chamber with ultra-quiet operation
- ◆ Visible alarm for low pressure indication
- ◆ Adjustable hangers to suit any kind of hospital bed frame
- ◆ Easy snap-on, vapor permeable & water resistant cover for easy cleaning and maintenance
- ◆ Interchangeable, individual air bladder for easy maintenance and cleaning
- ◆ Extra flaps on both top and bottom side of mattress base for added safety



Pressure Distribution

**Specifications**

		EXCEL 4000	
<b>PUMP</b>	Electrical	AC120V/60Hz, <1A AC230V/50Hz, <1A	
	Air Output (lpm)	> 4	
	Pressure Range (mmHg)	50 – 105	
	Cycle Time	8 min @ 60 Hz, 9.6 min @ 50 Hz	
	Dimension (L x W x H)	25.4 x 13 x 9.5 cm or 10" x 5.1" x 3.7"	
	Weight	1.6 kg or 3.5 lb	
<b>MATTRESS</b>	Arrangement	18 x 4" cells	
	Material	Cover	Nylon/PVC, light blue
		Cells	Nylon/PVC, blue
		Base	Nylon/PVC, dark blue
	Dimension (L x W x H)	180 x 80 x 10.2 cm or 70.9" x 31.5" x 4"	
Weight	4.3 kg or 9.5 lb		

All specifications are subject to change without notice.



**APEX MEDICAL CORP.**  
 9, Min Sheng St. Tu-Cheng, Taipei County, Taiwan  
 TEL: +886-2-2268-3100  
 FAX: +886-2-2268-6525  
 E-mail: ss@apexmedical.com.tw  
 http://www.apexmedical.com.tw

Distributed by:

